

Building Sustainability Together

PEFC ANNUAL REVIEW 2021



UKRAINE



The Association National Voluntary Forest Certification System, our member for **Ukraine**, achieved **PEFC endorsement** of its national forest certification system.

“The date 19 June 2021 has become a holiday for our organisation, the day our system was endorsed by PEFC. We believe this endorsement will help to transform the forestry industry in Ukraine from a source of raw materials to a seller of finished products to the world market.”

Mariya Maha, National Secretary

At the time of writing, our colleagues in Ukraine are safe, and PEFC is in ongoing contact with them. We have offered and are prepared to provide them with any support and assistance needed in this unprecedented situation.

Page 14

Highlights from 2021

The **Pan African Forest Certification (PAFC) Congo Basin** regional system achieved **PEFC endorsement**, becoming the first PEFC-endorsed regional forest certification system.

“Being part of a regional scheme is a tremendous opportunity for PAFC Cameroon. We are supported by the other PAFC members and help them back in return, leading to more efficiency in our actions.”

Reine Edwige Anjembe, President of PAFC Cameroon

Page 16

328M

We welcomed the first **PEFC-certified forest area** in South Africa, Ukraine, Vietnam, and Romania.

PEFC-certified hectares grew by nearly 4 million in 2021. Over 328 million hectares of forests are now PEFC certified.

Pages 14 & 16



12,671



CONGO BASIN



The number of **PEFC Chain of Custody certificates** grew by 299, to 12,671. We were especially happy to welcome the first PEFC certified companies in Brunei Darussalam and Nigeria.

Page 14

ARCHITECTURE



Together with the World Architecture Festival, we awarded the **Best Use of Certified Timber Prize**, rewarding architects for their use of certified timber as a main construction material for outstanding buildings.

The prize went to **Scion Innovation Hub, Te Whare Nui o Tuteata** by RTA Studio/Irving Smith Architects.

Page 4

The PEFC General Assembly elected **Eduardo Rojas Briales**, former Assistant Director-General and Head of the Forestry Department at FAO, as **Chair of PEFC International**.

“The past years have seen forests being put at the centre of key global debates, especially in combating climate change. This unprecedented fact provides huge opportunities to share broadly the expertise accrued in the PEFC family with key stakeholders in these deliberations.”

Eduardo Rojas Briales



CHAIR

Page 17

RUBBER

We strengthened our collaboration with the **natural rubber sector**, helping rubber-producing smallholders and companies achieve PEFC certification.

We became a member of the **International Rubber Study Group (IRSG)**, an intergovernmental organisation with the main objective of improving the transparency of the world rubber market and strengthening international cooperation on rubber issues.

Page 9



We enhanced our **collaboration with the furniture sector**, highlighting the importance of a sustainable furniture supply chain for planet and people.

PEFC International and 15 of our national members joined forces, to create a platform for increased cooperation and partnership among actors along the furniture supply chain.

Page 6



Professional and amateur photographers from around the globe took part in our 2021 **Experience Forests, Experience PEFC** Photo Contest. We received 5000 photos showing life, work, and play in the forest.

First prize went to Vitalii Popkov for his image ‘The Man and the Forest’, taken in Ukraine, showing a man and a horse taking wood out of the forest.

Page 12

PHOTOGRAPHY



Forests Are Home

FURNITURE

Moving forward together – innovation and collaboration within PEFC

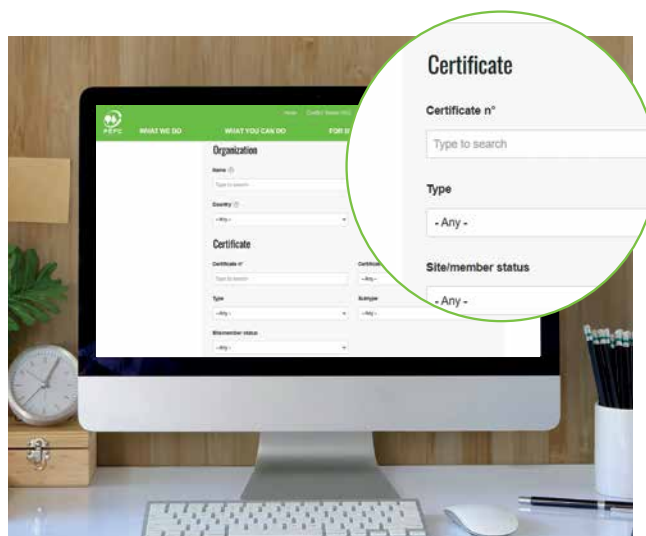
Strengthening the system through innovation

We are driving innovation to accelerate the uptake of forest certification and position it as a global tool. Our key activities in 2021 included the launch of a new database and search engine, and the facilitation of the transition to the 2020 standards.

Next steps on our pathway for the future

As part of the technological pathway for the future, we introduced a new PEFC database in June 2021. The database allows to keep track of accreditation certificates and notification contracts, and to register individual certified products and certified forest area, improving our forest management and chain of custody monitoring and evaluation capabilities.

Also the PEFC Find certified search engine has been re-implemented with new features, including the option to export PDF extracts, results tables with colour coded certificate and licence status indicators, search by tree species in products, and more information about certificates and licences.



Strengthening our training programmes

In order to offer certification for the 2020 PEFC Chain of Custody and PEFC Trademarks standards, auditors, certification decision makers and reviewers need to attend a chain of custody training recognized by PEFC International.

To ensure a harmonised implementation of the 2020 standards worldwide, we have revised our trainings, and launched the PEFC Training Recognition Programme.

This programme allows certification bodies to get formal recognition of their internal PEFC chain of custody training programme and carry out internal trainings in compliance with PEFC's requirements.

Over 1,000 auditors have already been trained in the new training recognition programme.

European accreditation bodies ready to offer accreditation for 2020 standards

Following the positive evaluation of the PEFC chain of custody by the European co-operation for Accreditation (EA) in early 2021, European accreditation bodies can provide accreditation against the 2020 PEFC Chain of Custody and Trademarks standards.

We have extended the transition period to 14 August 2022. After this date, all certification bodies must be accredited, and all chain of custody audits carried out against the 2020 standards.



“Being part of a regional scheme is a tremendous opportunity for PAFC Cameroon.”

Reine Edwige Anjembe, President of PAFC Cameroon

Better together – growth and collaboration in the PEFC alliance

As PEFC continues to grow, we are increasingly working in partnerships and advancing regional collaboration between our members and potential future members. In 2021, major steps were made in Central Africa and Southeast Europe.

Regional system endorsed – a first for PEFC

The Pan African Forest Certification (PAFC) Congo Basin regional system achieved PEFC endorsement, becoming the world’s first PEFC-endorsed regional forest certification system.

PAFC Congo Basin is formed by our national members for Cameroon, Congo, and Gabon, who developed this regional system together. Developing a regional system allows them to maximise their visibility and reach, share resources and knowledge, and reduce costs.

“Being part of a regional scheme is a tremendous opportunity for PAFC Cameroon. We are supported by the other PAFC members and help them back in return, leading to more efficiency in our actions,” said Reine Edwige Anjembe, President of PAFC Cameroon.

The system development was led by our international stakeholder member ATIBT – International Tropical Timber Technical Association, in close collaboration with PAFC Cameroon, PAFC Congo, PAFC Gabon, and Olam, another PEFC international stakeholder member.

Following the endorsement of the regional system, the three PAFC organisations will work on its implementation and support companies in their certification process.



Key progress in Southeast Europe

In 2021 a second regional system was submitted to PEFC, and is currently under assessment for endorsement: the Balkan Forest Certification system.

Our national members for Bosnia and Herzegovina, North Macedonia, and Slovenia developed a harmonized framework for their national forest management standards to create this regional system for the Western Balkans.

In other member countries around the world, systems are being developed and further improved. At the end of 2021, 12 countries were revising or expanding their PEFC systems, and 12 systems were under assessment for the maintenance of their endorsement.

PEFC national systems go through a periodic review five years after their national approval to ensure they are consistently updated to meet our evolving benchmarks and national and international expectations.



Helping each other reach higher – enhancing collaboration with sectors and partners

Outreach and engagement with the market

A key part of our work in 2021 was improving the position of forest products in market sectors such as construction, fashion, rubber, packaging and furniture. We intensified our collaboration with different actors from the forest-based supply chain and several PEFC members to amplify our collective impact.

Building with wood – building for the planet

“Scion Innovation Hub pays tribute to the local indigenous community and its history, as well as being a forestry research centre. Both are aligned with PEFC’s principles around community respect and continuous innovation.”

Dr Michael Berger, PEFC acting Secretary General



Building with certified wood is brilliant for our planet, our wellbeing, and our economy.

While other construction materials emit carbon, wood stores it, making it vital for climate change mitigation and achieving net zero carbon emissions targets.



More and more architects and constructors around the world appreciate the versatility and flexibility of wood, and the benefits it brings to people and planet.

Under the theme ‘**Designing the future with sustainable timber**’, PEFC works with a range of stakeholders to promote the use of certified timber in construction.

In 2021, we continued our partnership with the World Architecture Festival (WAF) by supporting the **Best Use of Certified Timber Prize**. The prize rewards architects and project teams for their use of certified timber as a main construction material for buildings outstanding in sustainability, innovation, quality, or aesthetics.

The award went to **Scion Innovation Hub, Te Whare Nui o Tuteata** by RTA Studio/Irving Smith Architects. The project is a reimagining of the headquarter building of Scion, a Crown Research Institute that specialises in technology development for the forestry industry.



"The global use of concrete causes more CO₂ emissions than a country like India."

Dr Pablo van der Lugt, architectural engineer

Named after Tuteata, an ancestor of the three local Māori subtribes, the project pays tribute to the local indigenous community and its history. The project is a cutting-edge showcase for engineered timber, not only in terms of the aesthetic but also what it contributes to a carbon-zero future.

In March, we hosted the webinar **Tomorrow's Timber Talk – powered by PEFC**, outlining the future of construction. Architectural engineer Dr Pablo van der Lugt took us on a journey through the centuries and into the future, showcasing how timber has evolved from a traditional building material to an engineered, high-performance material.

Developed by **PEFC Netherlands**, the series of webinars saw the interest of several of our national members, who hosted the talks for their national audiences.



A highly commended prize went to **Microlibrary Warak Kayu** by SHAU Indonesia. The Microlibrary is part of an initiative to increase interest in reading by creating environmentally conscious, multifunctional community spaces in low-income neighbourhoods.



Sustainable wood is also at the heart of **PEFC Norway's** construction campaign, raising awareness for PEFC-certified wood among municipalities, which, as the builders of public spaces such as schools, elderly care homes, and sports facilities, have a special responsibility.



PEFC Belgium hosted the webinar series **Archi Talks: Wood, the building material of the future**, featuring architects and sustainability pioneers, and published an e-book on sustainable wood in the construction sector.

Discover more:

tree.es/sustainableconstruction



Bringing the forest to our home with sustainable wooden furniture

Wooden furniture is all around us. Most of us use it every day. But this furniture had a life before it entered our homes – a life as a tree in a forest.

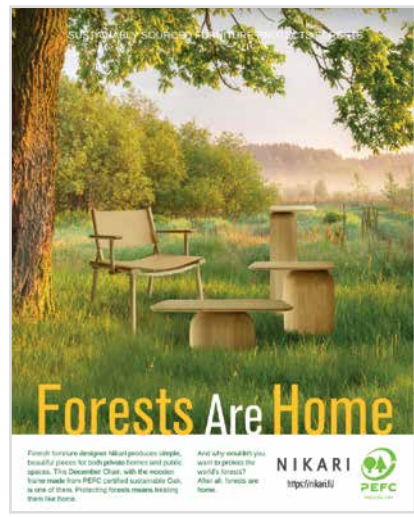


We believe that forests need to be respected as what they truly are to us – a home. And with forests under threat from land use change and climate change, it has become more important than ever for us to protect that home.

PEFC International and 15 of our national members have joined forces to create a platform for increased cooperation and partnership among actors along the furniture supply chain. Under the title "Forests are Home", we promote manufacturing and sales of sustainably sourced furniture, feature companies' good practices and foster a global partnership for sustainability.


Our efforts are both pro-furniture, and pro-forest. Buying a product made of certified wood is not about minimizing harm, but safeguarding forests, and providing livelihoods to the people connected to them.

Through events and trainings, we seek to bring together everyone involved in creating, designing, and building furniture, and raise awareness for the importance of responsible sourcing of forest-based materials.





“
Warm and Wood
uses timber from
PEFC-certified forests,
preferably from the region

 The company is constantly oriented towards purchasing PEFC-certified wood, for business ethics and to promote the principles of sustainable purchasing.



- We hosted a panel discussion, welcoming four speakers representing consumers, manufacturers, retailers, and forest certification. The panellists shared perspectives, and discussed the challenges to, and opportunities for, sustainability in the furniture sector.
- A two-day training informed actors in the wooden furniture supply chain, from manufacturers and traders to retailers, about PEFC chain of custody certification in the sector, and how they can benefit from it.
- Together with PEFC Italy and ENAIP Tesero High School, we are working on a four-year sustainability education programme for students who seek to become carpenters, wood- or sawmill workers. The programme covers sustainability in the wood supply chain, from the protection and management of the forest ecosystem to the traceability and legality of wood.
- We embarked on a four-year journey with the **ASEAN Furniture Industry Council (AFIC)** to improve sustainability outcomes throughout the furniture supply chain in the ASEAN region. Through a sustainability roadmap, we will promote furniture supply chain sustainability and responsible procurement together.

Watch the two-day
webinar recordings on
treee.es/furnitureweb21



Join us!

An important part of our work is to highlight the sustainability stories of certified companies and PEFC ambassadors in the sector through graphics and case stories.

Do you manufacture and sell PEFC-certified wood and wooden furniture? Let's celebrate your commitment and raise awareness for sustainable wooden furniture together!

Join us! Contact us at
huong.maggi@pefc.org

Visit furniture.pefc.org
to access free training, resources,
read our blog, case stories and news
about sustainable wooden furniture.



“PEFC-certified forests absorb roughly 315 million tonnes of CO₂ every year. That is equivalent to 30% of the annual emissions of the global fashion industry.”

Ana Belén Noriega Bravo, National Secretary of PEFC Spain

Forest fibres for sustainable fashion

Consumers increasingly expect brands to be environmentally friendly. Across the world, the fashion industry is responding, and is looking to replace its conventional materials with sustainable alternatives. Wood-based fibres are part of the solution.



Mercedes-Benz Fashion Week Madrid

Man-made cellulosic fibres (MMCF) require less water than cotton and produce fewer carbon emissions than synthetic fibres. If they come from a sustainable source, they even help safeguard our forests. Together with our partners, we are working to promote the use of MMCF, to make a difference for the future of the fashion industry, our forests, and our world.



Exchange and collaboration

We hosted a Textiles Webinar, with a panel of sustainability experts from **Sustainable Apparel Coalition (SAC)**, **UNECE/FAO**, **British Fashion Council**, **MANGO**, and **PEFC Spain**. They discussed the role of sustainably managed forests in mitigating climate change, and how responsibly sourced forest products can support the sector’s sustainability goals.



We have joined the **UNFCCC Fashion for Global Climate Action initiative** as a signatory to the Fashion Industry Charter for Climate Action. The initiative calls on the fashion industry to acknowledge the contribution of the sector to climate change and our shared responsibility to strive towards climate neutrality.

We launched a three-year strategic roadmap to promote fashion supply chain sustainability and responsible procurement with the **Textile and Fashion Federation (TaFF)**. The partnership will drive awareness among TaFF members, partners, and stakeholders of the importance of sourcing sustainable materials.

At **Texworld New York City**, we discussed how responsible sourcing of wood-based fibres can support brands’ climate goals with Lenzing Fibers and One Tree Planted, and together with IFCC, our members from Indonesia, we spoke at the **Jakarta Fashion Hub webinar**.

PEFC-certified fashion even made it to the catwalk! Fashion designer María Lafuente presented her newest collection, made with PEFC-certified fabrics, at the **Mercedes-Benz Fashion Week Madrid**.



Work with us!

The time to increase your positive impact is now. Let’s collaborate on promoting sustainable management of the world’s forests.

Join us! Contact us at julia.kozlik@pefc.org

"Natural rubber represents a 300 billion USD supply chain involving 40 million people."

International Rubber Study Group (IRSG)

Supporting sustainable rubber – for people and the planet

Natural rubber is a commodity essential to modern life. It appears in places we expect it, like tyres, and in places we don't, like pacemakers.



Whether we see it or not, natural rubber is used in the creation of more than 40,000 products. 85% of natural rubber is produced by six million smallholders, tapping and tending rubber trees on independent plantations. Once the productive life of those rubber trees is over, they provide value to plantation owners in the form of rubberwood.



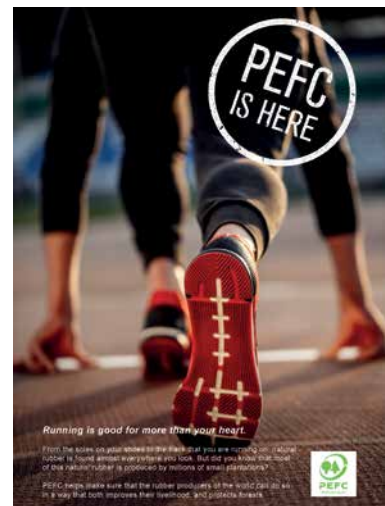
In 2021, we strengthened our collaboration with the sector, to help the natural rubber- and rubberwood-producing smallholders and processing companies prove their sustainable practices by obtaining PEFC certification.

Game-changing developments on the ground

2021 was a transformational year thanks to new certifications and partnerships.

Our pilot project with the **Vietnam Rubber Group (VRG)** culminated in the certification of 55,000 hectares of rubber plantations. Reacting to this newly available supply, **Weber & Schaeer**, one of the largest natural rubber trading houses, achieved PEFC certification, becoming one of the first companies to bring PEFC-certified natural rubber to buyers across the world.

PEFC became a member of the **International Rubber Study Group (IRSG)** and a founding supporter of the **Global Platform for Sustainable Natural Rubber (GPSNR)**. We collaborate with these global rubber industry organisations, along with countries and companies at both ends of the supply chain.



Watch the recordings of the webinars on tree.es/rubberwebinars

To learn more about sustainable natural rubber, visit rubber.pefc.org



"Paper is one of the planet's most recycled products, that can be recycled five to seven times."

United States Environmental Protection Agency (US EPA)

Spotlight on sustainable packaging



As the world faces up to the climate emergency, urgent action is required if we are to reduce our individual and collective environmental impact. The packaging sector has an important role to play in the reduction of unsustainable, oil-based materials.

40% of plastic produced is for packaging, and plastic packaging accounts for 50% of plastic waste.

Forests can be part of the solution, offering sustainable, renewable, and recyclable alternatives.

Increasing the use of forest-based packaging can help companies meet sustainability targets, and has a positive impact on the world's forests and the communities that depend upon them.



Joining forces to make a difference

We teamed up with several of our national members and partners, and together work to raise awareness for the enormous potential of PEFC-certified forest-based materials within the circular economy.

- The Consumer Goods Forum's Forest Positive Coalition released their Pulp, Paper and Fibre-based Packaging Roadmap in 2021, guiding members in their efforts to remove deforestation and conversion from their supply chains.

In the PEFC Webinar: **Collaboration for Forest Positive actions** speakers from Essity, Soil Association, and PEFC informed brand owners and retailers about the full pathway between the Roadmap, certification requirements, and on the ground audits.

- PEFC UK organized the webinar **Certified paper packaging and the circular economy**. Speakers from the Soil Association, Arjo Wiggins, and Biffa discussed how innovative certified paper-based packaging solutions are meeting the challenge for more environmentally friendly alternatives.



Watch the recording on tree.es/packaging-web-21

Work with us! Contact us at julia.kozlik@pefc.org

"The door of our bright wooden office will always be open for collaboration and exchange."

Maja Drča, EU Representative

PEFC FOR-TRADE – supporting sustainable forest trade in the Lower Mekong Region

2021 saw the launch of the new PEFC FOR-TRADE project, collaborating with the UN-REDD Programme's initiative for the Lower Mekong.



The PEFC FOR-TRADE programme stands for *Forestry and Trade for Development in the ASEAN region*. It works to strengthen trade through the institutionalization of forest certification infrastructure, and to enhance the development of national forest certification systems in Southeast Asia.



FOR-TRADE
FORESTRY & TRADE FOR
ASEAN DEVELOPMENT

PEFC FOR-TRADE works with the UN-REDD Programme as a key partner for their newly launched initiative *Sustainable Forest Trade in the Lower Mekong Region (SFT-LMR)*, promoting trade and sustainable forest management, reducing pressure on forests through improved governance in Cambodia, Lao PDR, Myanmar, Thailand, and Vietnam, and boosting transparency and cooperation between the Lower Mekong region countries and China.



Alongside policy and institutional reform, forest certification has become a powerful tool to limit illegal logging and to promote sustainable forest management and responsible timber trade throughout Southeast Asia.



PEFC International EU office moves to the "heart of the EU"

As of August, our EU office is located in the European Forestry House in the EU quarter of Brussels.



The move brings the office closer to a range of stakeholders and partners, facilitating exchange and knowledge sharing.

"This is a next step for our EU office, and we are very excited about it. As a global organisation, we closely follow relevant developments around the world, including the European Union," said Ben Gunneberg, CEO of PEFC International.

"More than a working space, we hope the new location will be a place where we can meet and interact with all stakeholders and colleagues."

Ben Gunneberg,
CEO of PEFC International



"We are excited about this change. The new location in vicinity of the EU institutions will support our EU engagement, and the door of our bright wooden office will always be open for collaboration and exchange with stakeholders and partners," added Maja Drča, who leads the EU office.

Our EU office will continue its engagement as a competent and credible forest certification partner in different EU policy areas and with various European stakeholders.



"Forests have a powerful, even magical effect on me and my work."

Vitalii Popkov, 2021 PEFC Photographer of the Year

Helping actors become ambassadors

We are reaching out and give the word to the people on the ground, to hear what forests and certification mean to them, making people and companies around the world our ambassadors for sustainability and forest certification.



Experience Forests, Experience PEFC

2021 saw the fifth edition of our **Experience Forests, Experience PEFC** Photo Contest. We were delighted to hear from professional and amateur photographers from around the globe.

Eleven of our national members reached out to photographers in their countries, inviting them to submit their best forest photos. We received 5000 photos showing life, work, and play in the forest.

First prize went to Vitalii Popkov for his image 'The Man and the Forest', taken in Zamagora Verkhovyna, Ukraine. The photo shows a man taking wood out of the forest with a horse.

"My photo is like a window in the portal of time. Looking at it, you are immersed somewhere in the middle of the twentieth century, at least," Vitalii explained.

Following the invasion of Ukraine by Russia in early 2022, this photo has since taken on even more significance, as it has indeed become a window into a better time.



A special event

The winning photo was announced in an online session on Facebook Live. Our CEO and a photographer discussed the photos in the finals, giving insight from a forestry and a photography perspective, helping the audience to see the different layers of each photo.

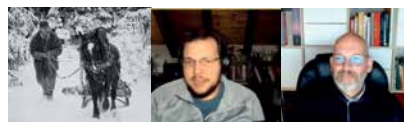
After an in-depth analysis of the winning photo by a second photographer, we heard from the winner himself, who shared how the photo came about.

Besides giving us gorgeous forest photos, the photo contest allows us to hear from forest lovers around the world. Not only the winner, but all the finalists shared the stories behind their stunning photos, giving an insight into the wonderful world of forests in their respective countries.



"The man's look is focused on his horse. He seems ready to react and help his teammate at any moment."

Victor Rodriguez, photographer



Read the stories at

treee.es/2021PhotoContest

Watch the winner announcement:

treee.es/2021PCevent

“World Rainforest Day is a wonderful occasion to discover the wonders and powers of our rainforests.”

Ben Gunneberg, CEO of PEFC International

Hearing from the people on the ground



PEFC certification is more than just standards. It is also about the people looking after the millions of hectares of certified forest area, and working in the thousands of certified companies along the supply chain. It is those people we want to hear from.

In our interview series *Meeting our Certified Companies*, we speak to companies from around the world, large and small, which are helping to safeguard our forests through their commitment.

Through texts and videos, they are sharing why they work with forest products, their visions for a sustainable future, and what a difference certification has made for their work and their business.

Discover the stories of our certified companies on treee.es/MOCC

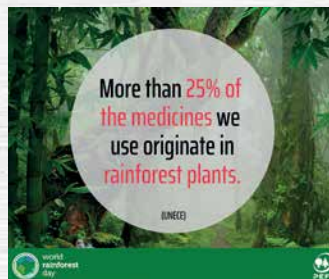
Acting together to protect rainforests, climate, and the planet

In addition to companies, we are collaborating with organisations to maximize our impact in safeguarding our forests.

We continued our partnership with the **World Rainforest Day** initiative, to celebrate the annual World Rainforest Day. The collaborative effort seeks to raise awareness and encourage action to protect the world’s rainforests.

We contributed with a week-long awareness campaign highlighting the wonders and powers of the world’s rainforests.

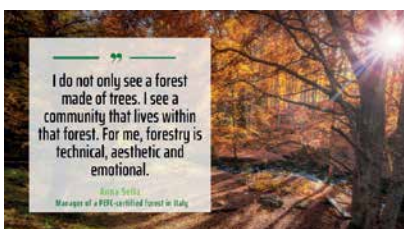
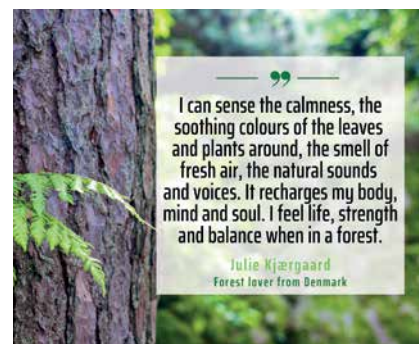
“This year’s event is more than a celebration of rainforests or a call for change. It’s an unprecedented act of collective action and collaborative coalition-building,” explained Niyanta Spelman, CEO of the Rainforest Partnership.



What does the forest mean to you?

Forests are for everybody, and they have a meaning for each of us personally. For 2021 International Day of Forests, we asked everybody, from our colleagues and partners to our social media followers, what the forest meant to them.

From generating employment, giving peace and calm, to providing fresh air and food, we received wonderful reasons for loving and appreciating our forests. Over two weeks, we shared them on social media, inspiring more people to think about the many meanings and functions of our forests.





PEFC membership

Statistics, facts & figures



National members represent PEFC in **55** countries

328 million hectares of forests globally are PEFC-certified

We welcomed the first certified forest area in a number of countries. In **South Africa**, over 400,000 hectares achieved PEFC certification.

In **Ukraine** 70,000 hectares were certified, in **Vietnam** 46,000 hectares and in **Romania** 12,000 hectares.

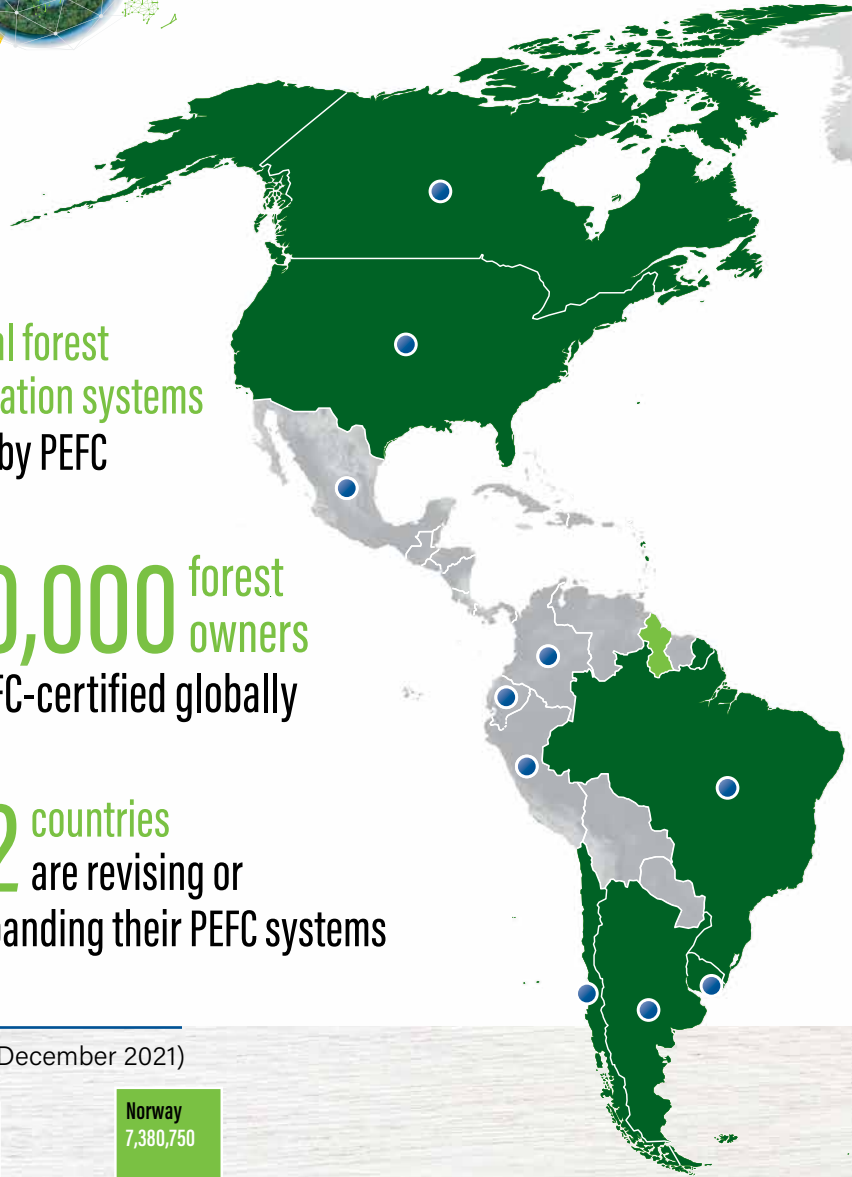
Australia saw the biggest increase in PEFC-certified forest area, growing over 65% from 11 million hectares to 18 million hectares. Worldwide, PEFC-certified hectares grew by nearly 4 million in 2021.

Africa, Europe, Oceania and **Central & South America** saw increases in their PEFC-certified area.

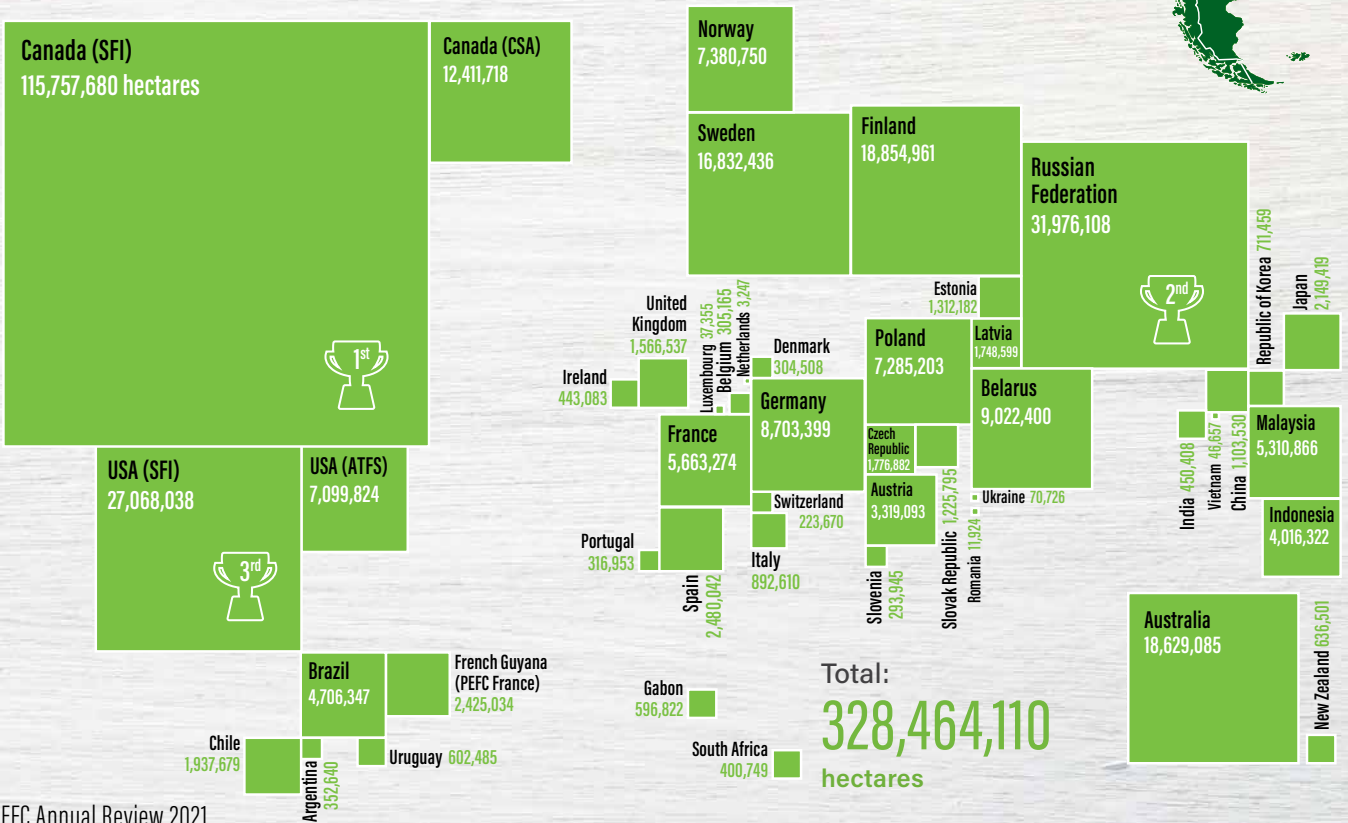
50 national forest certification systems are endorsed by PEFC

750,000 forest owners are PEFC-certified globally

12 countries are revising or expanding their PEFC systems



PEFC-certified forest area per country (as of 31 December 2021)



PEFC members

Endorsed members and systems (as of 31 Dec. 2021)

Country	Name
Argentina	Argentine Forest Certification System (CERFOAR)
Australia	Responsible Wood
Austria	PEFC Austria
Belarus	Republican Association of Forest Certification System
Belgium	PEFC Belgium
Brazil	Brazilian Forest Certification Programme (CERFLOR)
Bulgaria	Council for Sustainable Forest Management and Certification in Bulgaria
Cameroon	Cameroonian Association of the Pan African Forestry Certification
Canada	PEFC Canada, Sustainable Forestry Initiative (SFI)
Chile	Chile Forest Certification Corporation (CERTFOR)
China	China Forest Certification Council (CFCC)
Czech Republic	PEFC Czech Republic
Denmark	PEFC Denmark
Estonia	Estonian Forest Certification Council
Finland	PEFC Finland
France	PEFC France
Gabon	PAFC Gabon
Germany	PEFC Germany
Hungary	Hungarian Forest Certification Non-profit Ltd.
India	Network for Certification and Conservation of Forests (NCCF)
Indonesia	Indonesian Forestry Certification Cooperation (IFCC)
Ireland	PEFC Ireland
Italy	PEFC Italy
Japan	Sustainable Green Ecosystem Council (SGEC)

Country	Name
Latvia	PEFC Latvia
Luxembourg	PEFC Luxembourg
Malaysia	Malaysian Timber Certification Council (MTCC)
Netherlands	PEFC Netherlands
New Zealand	New Zealand Forest Certification Association (NZFCA)
North Macedonia	The Council for Sustainable Forest Management in the Republic of Macedonia
Norway	PEFC Norway
Poland	PEFC Poland
Portugal	PEFC Portugal
Republic of Congo	PAFC-Congo
Republic of Korea	Korea Forest Certification Council (KFCC)
Romania	PEFC Romania
Russian Federation	PEFC Russia
Slovak Republic	PEFC Slovakia
Slovenia	Institute for Forest Certification
South Africa	South African Forestry Assurance Scheme (SAFAS)
Spain	PEFC Spain
Sweden	PEFC Sweden
Switzerland	PEFC Switzerland
Thailand	The Federation of Thai Industries (F.T.I.)
Ukraine	Association National Voluntary Forest Certification System
United Kingdom	PEFC UK
United States	PEFC USA: American Tree Farm System (ATFS), Sustainable Forestry Initiative (SFI)
Uruguay	PEFC Uruguay
Vietnam	Vietnamese Academy of Forest Science (VAFS)

Non-endorsed members (as of 31 Dec. 2021)

Country	Name
Bosnia and Herzegovina	Association of Private Forest Owners "Naša Šuma"
Ghana	Working Group on Forest Certification
Guyana	Guyana Forestry Commission (GFC)
Lithuania	PEFC Lithuania
Myanmar	Myanmar Forest Certification Committee (MFCC)
Turkey	Association for Sustainable Forest Management, Forest Products and Services Certification

System News 2021:

Received endorsement:

- Association National Voluntary Forest Certification System (Ukraine)
- PAFC Congo Basin

Under assessment for initial endorsement:

- Balkans regional system

Received re-endorsement:

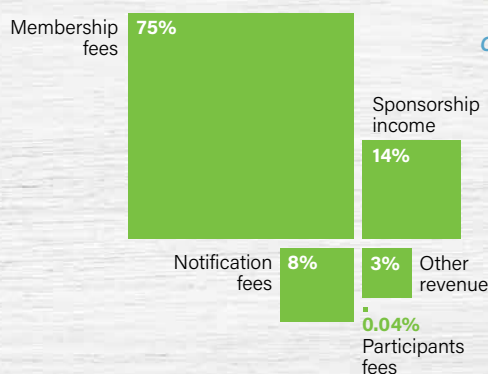
- Malaysian Timber Certification Council (MTCC)
- PEFC Switzerland

Financial information

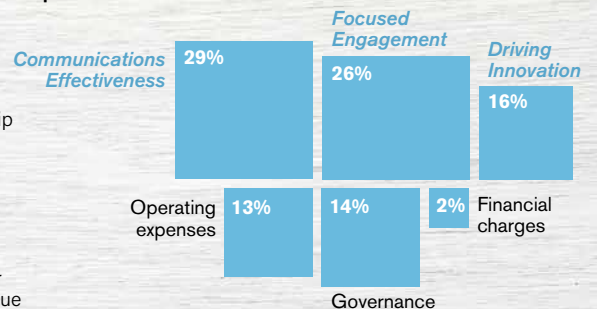
Budget summary:

In 2020, PEFC operated on a total income of about CHF 5.5 million.

Income sources 2020



Expenditure 2020



International Stakeholder members:

- APP Timber
- Aracuo
- Asia Pacific Resources International Holdings Ltd. (APRIL)
- Association Technique Internationale des Bois Tropicaux (ATIBT)
- Bioenergy Europe
- Building and Wood Worker's International (BWI)
- Confederation of European Forest Owners (CEPF)
- Confederation of European Paper Industries (CEPI)
- Double A
- European Confederation of Agricultural, Rural and Forestry Contractors (CEETTAR)
- European Panel Federation (EPF)
- European Pulp Industry Sector Association AISBL (EPIS)
- European Timber Trade Federation (ETTF)
- European Tissue Symposium (ETS)
- International Council of Forest and Paper Associations (ICFPA)
- International Family Forestry Alliance (IFFA)
- Metsä Group
- Mondi
- Olam International
- Purinusa Ekapersada (APP)
- Regional Community Forestry Training Center for Asia and the Pacific (RECOFTC)
- Sappi
- Smurfit Kappa
- Stora Enso
- Suzano Pulp and Paper
- Union of Silviculturists of Southern Europe (USSE)
- UPM-Kymmene Corporation
- WestRock Company
- Weyerhaeuser Company

Extraordinary members:

- European Confederation of Woodworking Industries (CEI-Bois)
- European Landowners' Organization (ELO)
- Fédération Européenne des Communes Forestières (FECOF)
- Manufacturers of Educational & Commercial Stationery European Association (MECSEA)
- Union of European Foresters (UEF)

PEFC Board members

CHAIRMAN

Eduardo Rojas Briales

VICE CHAIRS

David Ford
Riikka Joukio

BOARD MEMBERS

Dradjad Wibowo	Mohd Nurudeen Iddrisu	Sarah Khatib
Gerald Pfiffinger	Suzette Weeding	Sara El Kadri
Josien Tokoe	Fatimah Mohammad	Guy Gleysteen
Kurt Ramskogler	Lena Ek	



At the end of 2021, our CEO and Secretary General, **Ben Gunneberg**, left PEFC after having led the organisation for 22 years. We thank Ben for his outstanding service and commitment, and for making PEFC what it is today. We wish him all the very best for the future.

PEFC International team

Communications

Thorsten Arndt
Head of Communications

Hannah Prins
Communications Manager

Anja Gehrer
Communications Officer

Asia Support

Richard Laity
Southeast Asia Manager

Benson Yu
Regional Manager China

Finance

Gill Parker
Finance Manager

Silvana Neva
Finance Officer

Administration

Sandrine Laffitte
Office Manager & PA to the CEO

Marketing

Fabienne Sinclair
Head of Marketing

Huong Maggi
Marketing Officer

Julia Kozlik
Marketing Officer

Development

Rémi Sournia
Development Manager

Thomas Seyvet
Junior Development Officer

Technical

Michael Berger
Acting Secretary General & Head of Technical Unit

Marta Martínez Pardo
Technical Manager

Linda Matole
Technical Officer

Matthew Parkan
Technical Officer

Lise Favre
Technical Officer

Hubert Inhaizer
Technical Officer

Luca Saccone
Junior Technical Officer

EU Representation

Maja Drča
EU Representative



PEFC International
 ICC Building C1
 Route de Pré-Bois 20
 1215 Geneva 15
 Switzerland

t +41 22 799 45 40
 e info@pefc.org
 www.pefc.org



2022 © PEFC

Front cover: Sonia Chapelle, Phichet Chinnabutr, Patrick Reynolds, Yusuf Madi ('Experience Forests, Experience PEFC'), Ploipiroon/Shutterstock (wood texture background). Inside front cover: Association National Voluntary Forest Certification System, ATIBT, Felix Mittermeier/Pexels, Skjern Paper. 1: Patrick Reynolds, Vitalii Popkov ('Experience Forests, Experience PEFC'), Dewwa Rachan, PEFC Intl. ('Forests Are Home'). 2: BongkarnGraphic, VisionPro (both Shutterstock), PEFC Intl. 3: PEFC Intl. (multiple), Caroline Duhesme (tall trees), Stanislaw Kachyna/Shutterstock. 5: Patrick Reynolds (all). 6: Warak Microlibrary, Pablo van der Lugt, Derix Group, B&K Structures, PEFC Netherlands (both), PEFC Belgium, Splitkon. 6: Vladimir Konstantinov/Shutterstock, PEFC Intl. (all 'Forests Are Home'), Lilas Ghannoum/Dreamstime, Wichai Prasomsri/Shutterstock (also p. 7). 7: Nathan Oakley/Unsplash, Jannarong/Shutterstock, PEFC Intl. (all 'Forests Are Home'), Dugdax/Shutterstock. 8: María Lafuente, PEFC Intl. (both), Texworld (both). 9: Phichet Chinnabutr, PEFC Intl. (all 'PEFC Is Here'). 10: Arjo Wiggins (both on left), Sonia Chapelle, PEFC UK (multiple). 11: Dick Hoskins/Pexels, Phan Minh Quang, VNFOREST, Maja Drča (both office photos), Paul Barbar/Shutterstock. 12: Vitalii Popkov, Sofyan Efendi, Jari Romppainen, Tan Ee Long, Yusuf Madi, Timo Sundgren, (all 'Experience Forests, Experience PEFC'), PEFC Intl. 13: PEFC Intl. (multiple), Alzamora Group, Rainforest Partnership. Back cover: Vitalii Popkov ('Experience Forests, Experience PEFC'), PEFC Intl. ('PEFC Is Here', 'Forests Are Home'), Arjo Wiggins, Patrick Reynolds, Tran-le-tuan/Pexels, B&K Structures.

